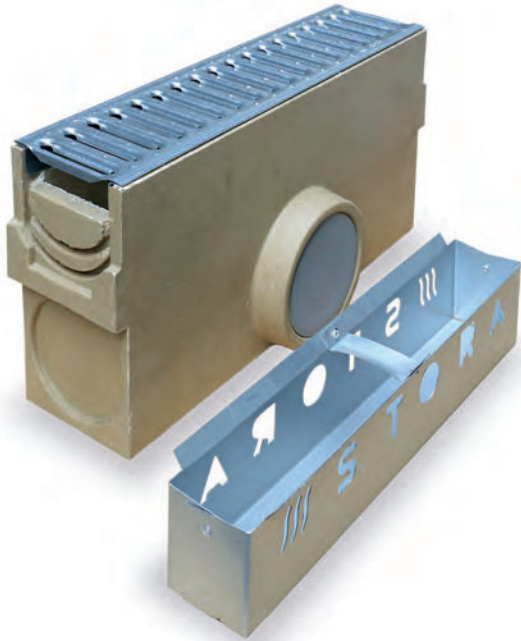


## SUMP UNIT for STORA SELF 100

EN1433:2005

A15

B125



### DESCRIPTION

Polyester concrete one part sump unit (L=0,5m) with bucket for Stora-Self 100 channel

### AVANTAGES DU PRODUIT

- Length 0.5m, height 250
- For all Stora-Self 100 channels, height 60, 80 and 100
- For all domestic uses
- A wide range of gratings for aesthetic drainage
- Delivered with galvanised bucket
- Grating fixing system: FIX or M8 screws (following on the type of grating)
- Horizontal outlet  $\varnothing$  110

### MATERIAL

- Sump unit: polyester concrete
- Bucket: galvanised steel

### CERTIFICATION

Certified EN 1433:2005

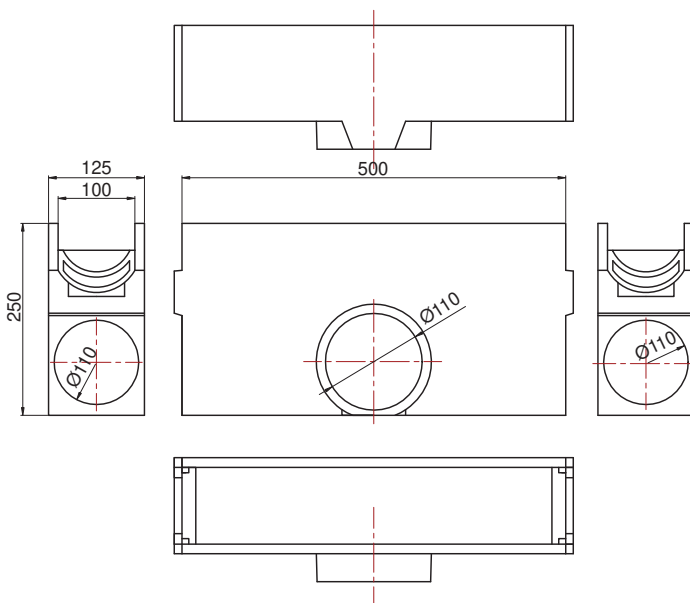
### PLACE OF INSTALLATION

Group 1, Class A15 →see EN1433

Around private houses: on terraces, in front of garage doors and on domestic driveways.

Group 2, Class B125 →see EN1433

Footways, pedestrian areas and comparable areas, private car parks or car parking decks.



REFERENCE	WITH GRATING (L 0,5M)	ARTICLE N°	KG	UNITS PER PALLET
Sump unit for Stora-Self 100 channel	slotted galva. grating A15, 10mm slot	AU10011101N	12,70	
Sump unit for Stora-Self 100 channel	slotted galva. grating A15, 6mm slot	AU10011103N	12,70	
Sump unit for Stora-Self 100 channel	slotted ductile iron grating B125, „S” 10mm slot	AU10011367	14,70	
Sump unit for Stora-Self 100 channel	iron grating B125, meshes 30x10mm	AU10011334N	14,70	
Sump unit for Stora-Self 100 channel	iron grating B125, meshes 30x10mm KTL	AU10011335N	14,70	

Sizes in mm - Weights, sizes and sketch are indicative - Uncontrolled distribution.