

## STORA OPTIMA PLUS 150 - H245 with E600 slotted ductile iron gratings, "WAVE"

EN1433:2005

E600



### DESCRIPTION

Polyester concrete drainage channel, width 150, height 245 with protective iron profile and slotted ductile iron gratings E600, "WAVE" 12mm slot.

### PRODUCT ADVANTAGES

- Grating: 2 slotted gratings ductile iron, "WAVE" 12mm slot
- Waterway area of the 2 gratings: 3,10 dm<sup>2</sup>
- Hydraulic capacity of the 2 gratings: 20,40 L/sec
- Drainage channel with protective iron profile
- Grating slot < 20 mm, for additional security for wheelchairs and bicycles.
- Predrilled vertical outlet Ø160
- Grating fixing system: anchorage type I
- The channels are assembled against each other by means of a tongue and groove jointing system (male/female); to ensure the channels watertightness it is recommended to use a suitable elastic polyurethane sealant.
- Can be installed in cascade with height 195.

### MATERIAL

- Channel: polyester concrete
- Channel profile: ductile iron GJS 500-7 following on EN1563
- Grating: ductile iron GJS 500-7 following on EN1563

### COATING

Grating: Non-toxic and non-polluting black water paint

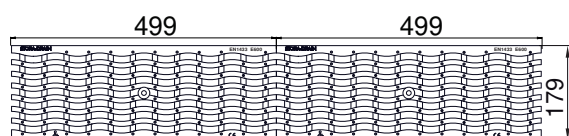
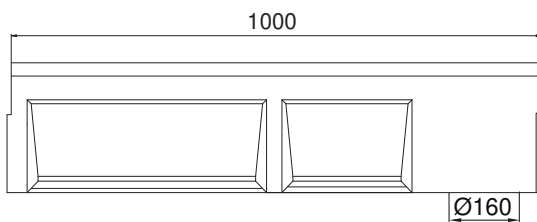
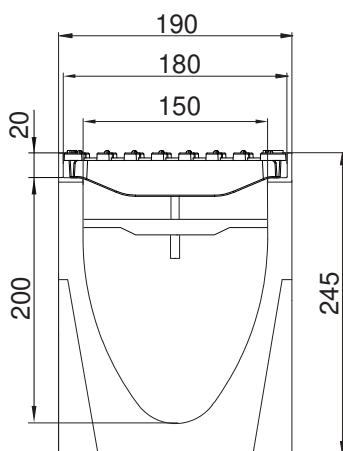
### CERTIFICATION

Certified EN 1433:2005

### PLACE OF INSTALLATION

Group 5, Class E600 →see EN1433

Areas subjected to high wheel loads. Only longitudinal use, never transverse direction.



### OPTIONS

- Sump unit
- Stepped fall
- Endcap with Ø 110 outlet
- Also available in height 1955
- Channel 0,5m cross piece with vertical outlet Ø 160

| REFERENCE   | ARTICLE N°  | KG    | UNITS PER PALLET |
|---|-------------|-------|------------------|
| STORA-OPTIMA PLUS 150 H245 ductile iron gratings E600 | SOP15241371 | 51,30 |                  |
| STORA-OPTIMA PLUS 150 H245 channel 1m                 | SO15241000  |       |                  |
| Ductile iron gratings E600, "WAVE" 12mm slot          | RSO150E371  |       |                  |
| Anchorage type I                                      |             |       |                  |

Sizes in mm - Weights, sizes and sketch are indicative - Uncontrolled distribution.