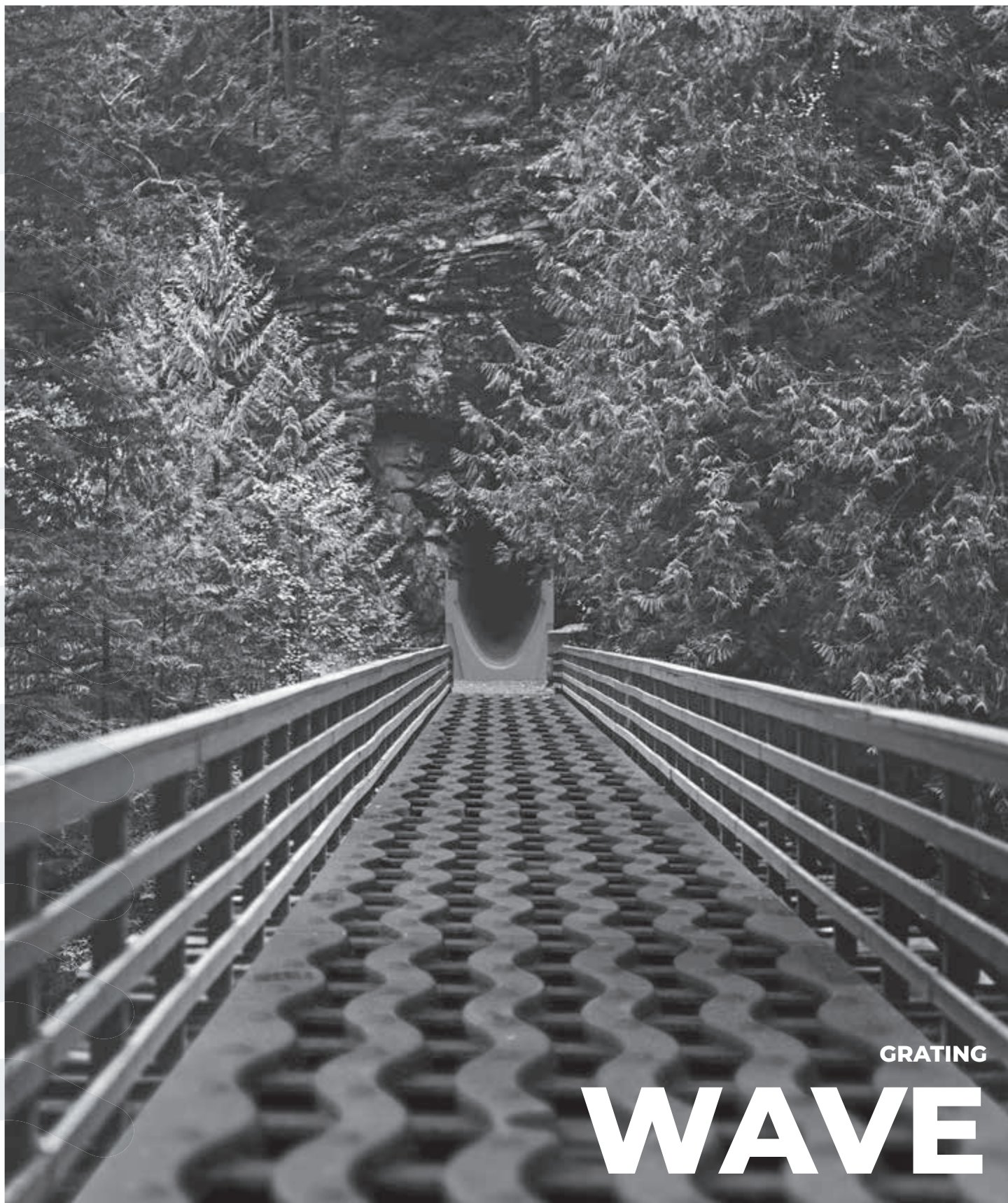




# STORA-DRAIN

POLYESTER CONCRETE DRAINAGE CHANNELS



GRATING

# WAVE



INNOVATION :: QUALITY :: SECURITY :: COMFORT :: DESIGN



**100%**  
Recyclable



**EN1433**  
manufactured in  
accordance with EN1433



**D400**  
Load class



**100% IDENTIFICATION**  
Manufacturer's marks and  
batch numbers

**QUALITÉ**  
GJS 500-7 following  
EN1563

**COATING**  
Non-toxic and  
non-polluting black  
water paint

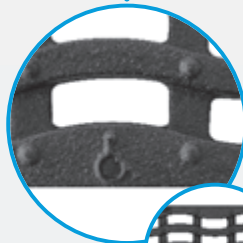


**MARKING CE (DoP)**  
complies with the EU Directive  
(Directive 305/2011/eu of 4  
June 2011, replaces Directive  
89/106/eeg)

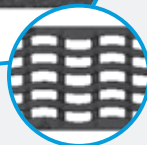


**MODERN DESIGN**  
Aesthetic slots

**ANTI-SKID  
SURFACE**



**BICYCLE  
AND WHEELCHAIR  
FRIENDLY**  
Slot is never bigger than 20mm



[www.stora-drain.be](http://www.stora-drain.be)

IMCOMA sa | Zwaarveld 32 | 9220 Hamme, Belgium | phone +32 (0)52 499 899 | fax +32 (0)52 470 776 | info@imcoma.com

IMCOMA S.A. is not responsible for printing errors and reserves the right to change the technical specifications at any time without prior notice. The colours may differ from the images. Dimensions in mm.